

# SECTIONAL STORAGE OF KEYS AND SMALL ITEMS

«**CK-12**»

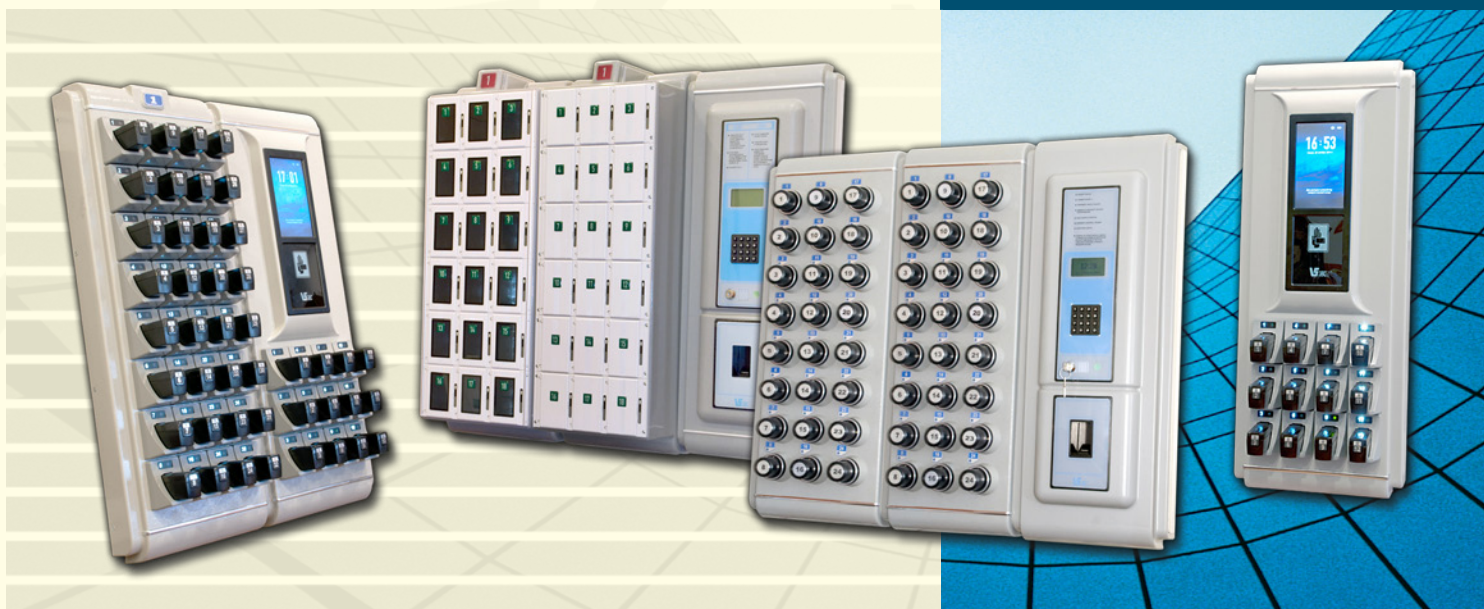
«**CK-24**»

«**CK-32**»

«**CD-18**»

The system is designed for organizing storage, receipt/delivery of the keys on the operating business premises, offices, etc., as well as automated time tracking of delivery/receipt of keys and registration of persons who give/receive keys and small items in a walk-through manner on objects that have restrictions.

- ▶ **SECTIONAL PRINCIPLE OF THE DEVICE**
- ▶ **EASY CAPACITY EXPANSION: UP TO 10 STORAGE SECTIONS**
- ▶ **24 - 32 PEN CASES (18 CELLS) IN THE 1ST STORAGE SECTION**
- ▶ **INDEPENDENT OR ACCESS CONTROL SYSTEM CONTROLLED WORK VIA ETHERNET OR RS-485 INTERFACES**
- ▶ **THE POSSIBILITY OF WORK WITH DIFFERENT TYPES OF AUTHORIZATION: ANY TYPE OF PROXIMITY CARDS READER OR BIOMETRIC DEVICES.**
- ▶ **AUTOMATED TIME TRACKING OF ISSUE / RECEIPT**



The system allows to build a functional component or a finished product, which can work both independently and under the control of an external PC, as part of integrated security system.

The main feature of the storage system is the elimination of human influence for an unauthorized access to keys or objects in the storage section, and changes to the information on operations with the system (issue/receipt, etc.).

**MADE  
IN RUSSIA!**



**MADE IN RUSSIA!**

## COMPONENTS OF THE SYSTEM

- Control section "SU" or control section "SK-12" with the 12 key boxes.
- Storage section "CX-24(32) with the 24(32) key boxes or storage section "CD-18" with the 18 sell storage.
- Special software "C-Monitor" for working as a part of an integrated security system.
- «Master» electronic cards.



## ADDITIONAL EQUIPMENT

- Proximity cards (if any proximity card reader).
- USB interface converter to the RS-485 («K1A-USB»).
- Emergency release device («PAR-3»).

## STORAGE SYSTEM

The sectional principle of the system allows the user easily change the capacity and configuration of the system as needs arise.

Various ways to identify the staff and their level of access: PIN input from the keyboard; proximity card of various types; biometric identification (fingerprint).

The system consists of a control section and a storage section of different models. The maximum number of storage sections supported by one control section is up to 10 pieces.

Storage section is designed for storing two types of keycases or small items in storage cells. All the storage section have a builtin controller that controls the basic functions of the section by the control section commands.

The storage system is placed on a wall or on a special rack attached to the floor.

Specialized software «C-Monitor» is used for remote control of the system from the computer.

In addition to the software «C-Monitor» for integrated security systems («EVS»), the storage system is supported by the APACS, ORION, ITRIUM, LYRIX and others.

## STORAGE FEATURES

- The presence of the possibility to put the premises for protection automatically when returning the keys to the safe.
- Getting / putting of keys is possible only with the registration of personal proximity card or a fingerprint, which allows you to take and pass only certain, pre-defined keycases.
- Alarm signal is produced while there is an unauthorized attempt of key removal or system break (the facts of alarms are recorded to the internal memory).
- Error actions are served with a voice message.
- The design of the device allows you to place it on the wall or on a special rack attached to the floor.
- The device is powered by 220 V and has a built-in backup battery.

## "C-MONITOR" SOFTWARE BASIC CAPABILITIES

- Support for the older devices with RS-485 interface, and new devices with Ethernet.
- Maintenance of multiple devices with a single event log for all connected devices.
- Reception and display of information on the state of the storage cells of all connected devices (opening / closing cells, withdrawal / return keycases).
- Fixation of the stuff actions with the issuance of notices of unacceptable actions.
- Monitoring performance of connected devices (power status, the status of the internal power supply, the status section).
- Development of a database of users with access to the devices. Each user is given a list of available storage locations, and access schedule is assigned to cells.
- Record user database into internal memory devices.
- Different access rights to the functions of the software (editing database users, edit access schedules, writing to the device) on the basis of multi-level password system.

## CONTROL SECTION "SU" AND "CK-12"

Control Sections are the core of the system and are designed to control an access to the storage sections and communication with an external computer equipment.

Each of the control unit has:

- The power supply, supplying all sections of the low-voltage power supply;
- The reserve battery that provides uninterrupted power supply system in case of failure of the main power supply;
- The central controller that provides autonomous operation of the system;
- Controls (display, keyboard);
- User identification system (proximity card reader, fingerprint, etc.)

All events, such as: opening or closing the cell, receiving / delivery of keycases, fingerprint registration (proximity card registration), etc., as well as the current time and date of the event is recorded in the internal memory. Thus, the protocol that is stored in the device memory or on the hard disk of the connected computer, allows to control the use of premises.

### THE DISTINCTIVE FEATURES OF THE MODEL "SU"

- high-capacity battery backup;
- the ability to embed large-sized section of the reader of contactless cards;
- low price.

### THE DISTINCTIVE FEATURES OF THE MODEL "CK-12"

- 7" color display with touch panel;
- integrated storage module of plastic keycases of 12 cells capacity;
- the possibility of work from external 12 volts DC voltage.

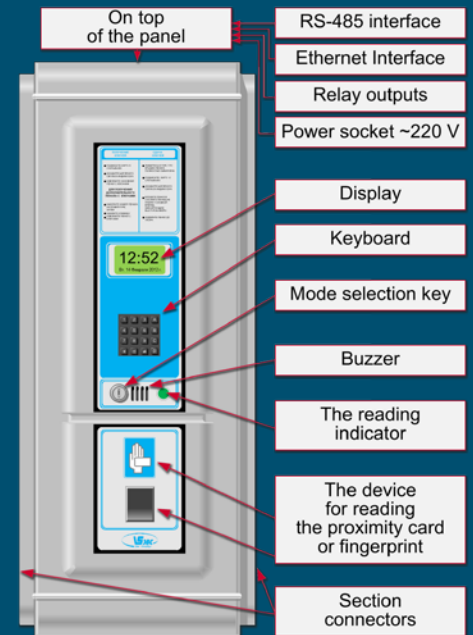
### BASIC TECHNICAL CHARACTERISTICS OF THE CONTROL SECTION

	"CU"	"CK-12"
Capacity storage unit, cupboards	-	12
Number of people served:		
With the card reader	up to 5100	up to 5100
With a fingerprint reader	up to 1000	up to 1000
Number of events, stored in internal memory	up to 20 000	up to 20 000
Interface for reader	Wiegand	Wiegand
Communication interfaces with external equipment	RS-485, Ethernet	RS-485, Ethernet
Number of connected storage section	up to 10	up to 10
Power supply, V	~220	~220 or =12
Power consumption ~ 220 V, Wt	not more, than 60	not more, than 52
Current consumption from the source of 12V, A	-	3,0
The duration of the built-in standby power supply, clock	at least 8	at least 3
Overall dimensions, mm	800x325x135	800x325x175
Weight, kg	11	11

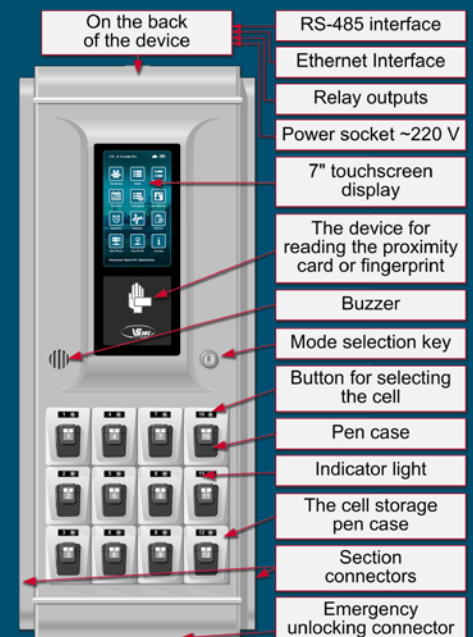


**MADE IN RUSSIA!**

### CONTROL SECTION «CU»



### CONTROL SECTION «CK-12»





**METAL CASES FOR KEYS  
FOR "CX-24".  
PLASTIC CASES FOR KEYS  
FOR "CX-32/CK-12".**

- Keycases are fixed in its cell by an electromagnetic lock, which eliminates the possibility of unauthorized reception of the key.
- Each keycase has its number and the electronic code that allows to put a keycase only to certain cell of the specified storage section.
- The internal protocol is registering any operation with the keycases, like the operation, the number of proximity card (fingerprint), keycase number, date and time.
- Metal keycase cover (code head) also serves as a key ring.
- On special request, the length of the metal keycase can be increased.



- Metal keycases are intended for storage of keys in the storage section "CX-24".



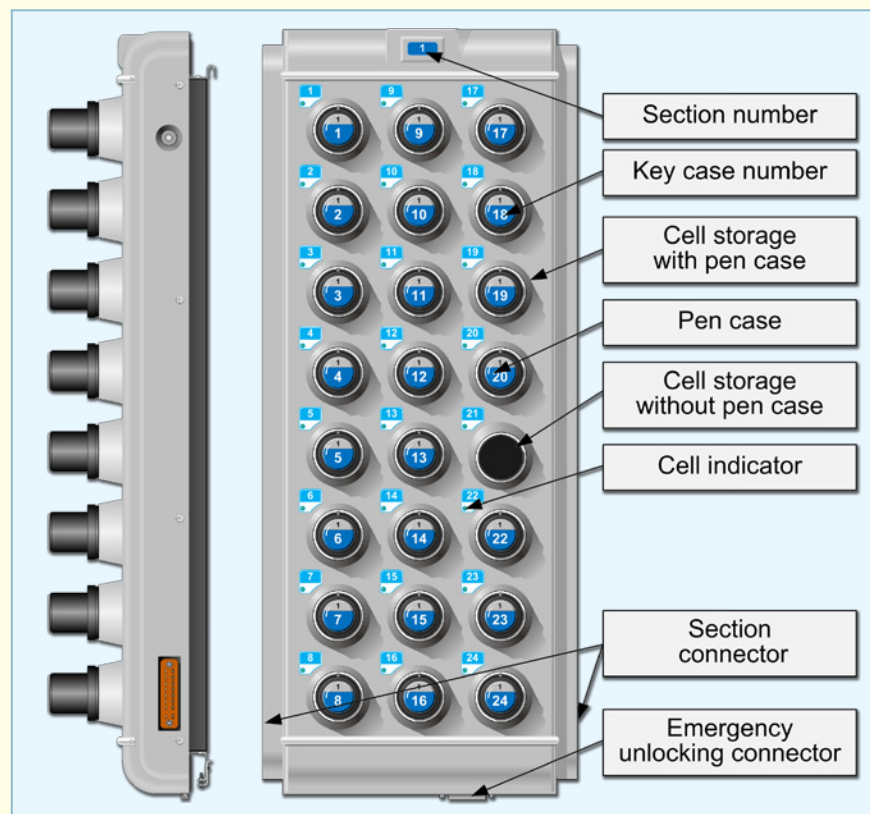
- Plastic keycases are intended for storage of keys in the storage section "CX-32" and the control section "CK-12".

## STORAGE SECTION "CX-24"

Section allows you to place 24 metallic cylindrical keycases with a diameter of 34 mm and a length of 108 mm, which are fixed in the cells of the section by electromagnetic locks, which eliminates the possibility of unauthorized reception of the key.

Keys (or a bunch of keys) on the premises are kept in individual keycases. Cover of keycase serves as a key ring at the same time.

Each keycase has its own number and an individual electronic code that does not allow to put a keycase to a different slot.



On special request, the length of the metal keycase can be increased.

### MAIN TECHNICAL PARAMETERS "CX-24"

The capacity of the storage unit, keycases	24
Dimensions (storage section), mm	800x325x168
Weight (storage section), kg	15
The external dimensions of the pen case, mm	∅40x138
The internal dimensions of the pen case, mm	∅34x108 (*)

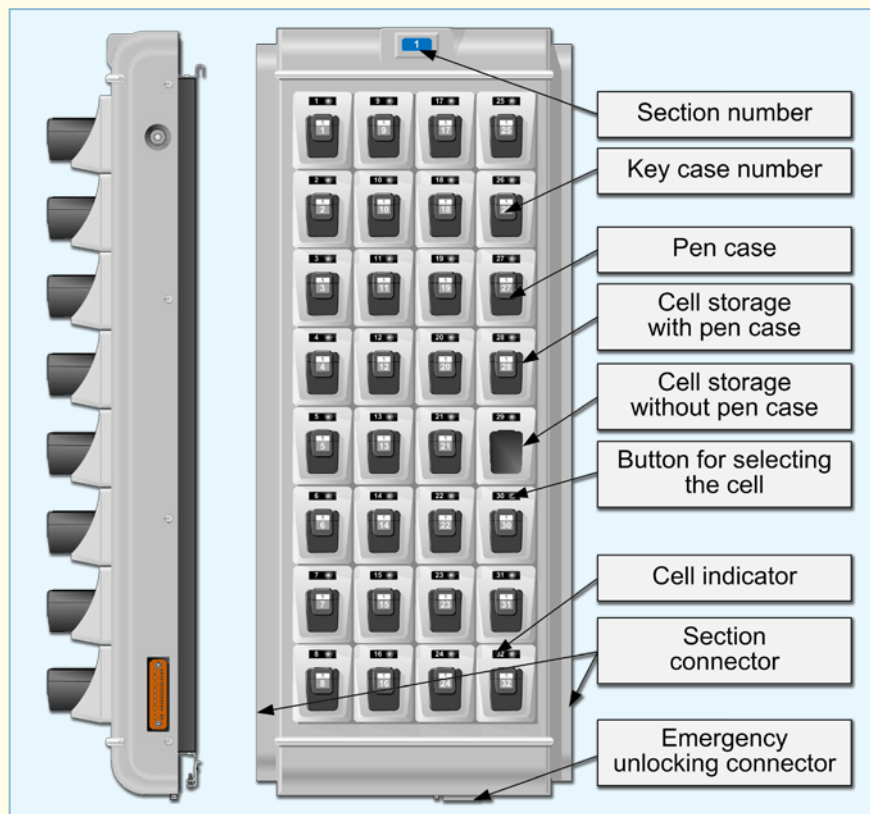
\* - the length of the keycase can be increased up to 200 mm (optional).

## STORAGE SECTION "CX-32"

Storage section allows you to place 32 rectangular plastic keycases with internal dimensions 24x36x122 mm, which are fixed in the cells of the section by electromagnetic locks, which eliminates the possibility of unauthorized reception of the key.

Keys (or a bunch of keys) on the premises are kept in individual keycases.

Each keycase has its own number and an individual electronic code that does not allow to pass a keycase to a different slot.



**MADE IN RUSSIA!**

**POSSIBLE COLORS FOR «CX», «CU» AND «CK-12»**

«EVS» offers a wide color choice for sections of the system. Below are some of the possible colors:

-  White, glossy.
-  Ivory, glossy.
-  Light gray, glossy.
-  Light gray, shallow texture.
-  Ocher, shallow texture.
-  Light gray, deep texture.
-  Light blue, deep texture.
-  The black, glossy.
-  The black, shallow texture.

**MAIN TECHNICAL PARAMETERS "CX-32"**

The capacity of the storage unit, keycases	32
Dimensions (storage section), mm	800x325x175
Weight (storage section), kg	11
The external dimensions of the pen case, mm	31x41x135
The internal dimensions of the pen case, mm	25x35x121

**STORAGE SECTION "CX-MP"**

The storage section «CX-MP» is designed for storing small items locked in individual cells. Inside the cell size 60x95x190 mm it is possible to store cell phones (smart phones), datastamps, compact cameras, keys, wallets, etc.

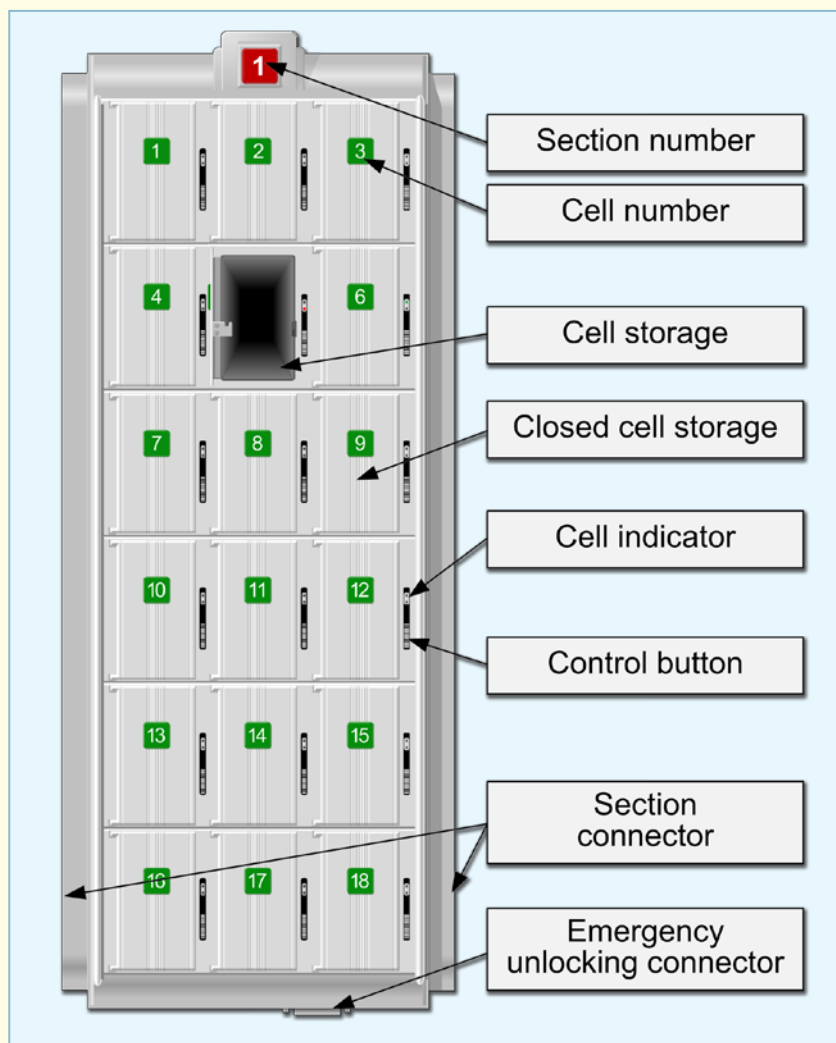
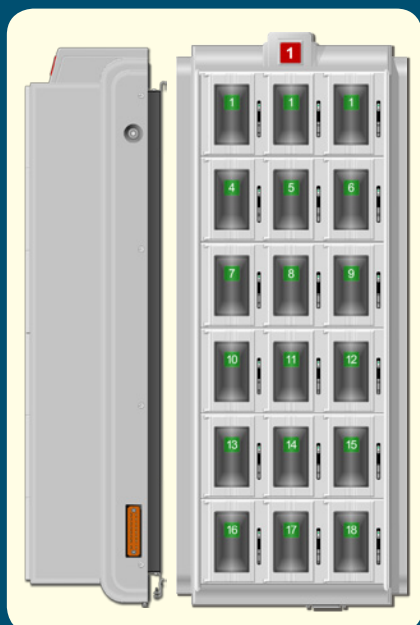
Each section has 18 storage cells. The doors of the cells (all-metal or clear plastic) are equipped with electromechanical locks. Near the cells are located: the indicator light and the control button (in the case of permitted access to multiple cells).

**MAIN TECHNICAL PARAMETERS "CX-MP"**

The capacity of the storage unit, cells	18
Dimensions (storage section), mm	800x325x210
Weight (storage section), kg	15
The internal dimensions of the pen case, mm	60x95x190



**MADE IN RUSSIA!**



It is possible to make a storage section on the individual requirements of the customer (with the required number and size of cells).

## REMOTE EMERGENCY RELEASE

Remote emergency release device is used as an accessory to the electronic safe «CK-12», «CK-24», «CK-32» and «CD-18». The device is designed for emergency opening of storage sections in the event of equipment failure.

The operating principle of the device is giving the energy by the internal battery to a selected group of cells for their safe release. As part of the delivery the device has a charger. Also there is an opportunity to work from the external source of 12 volts.



■ «PAR-3» for all types «CX», «SU» and «CK-12».

### BASIC TECHNICAL CHARACTERISTICS

Rated supply voltage panel, Volt	~220
Maximum power consumption, Wt	not more, than 35
Rated voltage circuits unlock Volt	12
The number of openings of cells when running on internal battery	at least 100
Dimensions excluding connect. cable, mm	205x150x80
Weight, kg	no more 2

SAIN-PETERSBURG, RUSSIA

WWW.EVS.RU

E-MAIL: KUTSENKO@.EVS.RU