

TELEVISION CAMERAS EVS



HIGH SENSITIVE TV CAMERAS

THE SENSITIVITY FIGURES UP TO 0,0002 LUX AT NIGHT

RECORD IN SENSITIVITY



TV CAMERAS FOR DIFFICULT WEATHER CONDITION

SPECIAL PROCESSING MODE OF 20 TIMES CONTRAST INCREASING WHILE WATCHING THROUGH HAZE, SNOW OR RAIN



RUSSIAN LEADING CAMERA MANUFACTURER

MADE IN RUSSIA!



EXAMPLES OF WORK

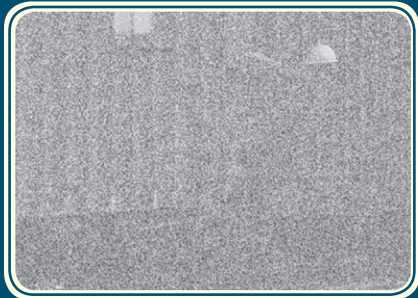


Illustration of the surveillance during the night with the WAT-902H (top) and VNC-752-H3 (bottom). The illumination on the object is about 0.0004 lux.



Illustration of the surveillance during the night with the WAT-902H (top) and VNC-753-H3 (bottom). The illumination on the object is about 0.00006 lux.



FINE QUALITY AT DAY UNBEATEN SENSITIVITY AT NIGHT

«EVs» has succeeded in achieving unprecedented levels of sensitivity in its CCD based range of CCTV cameras. This is accomplished by special processing of the video signal directly inside the CCD.

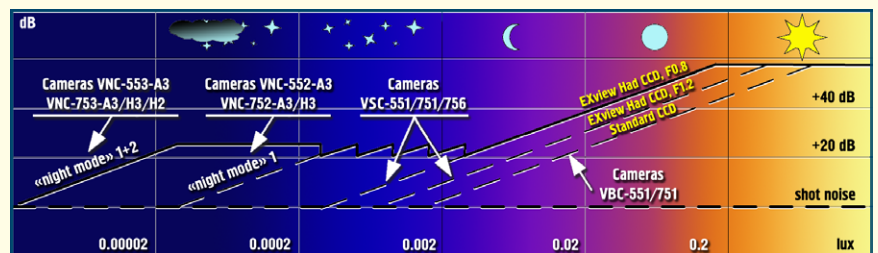
This technology produces an increase in sensitivity of up to 28 times without losses in picture dynamics or up to 100 times in maximum sensitivity mode if compared to usual ExView CCD cameras. "EVs" has achieved a record value for CCD cameras (model "VNC-753-H3") of 0,00002 Lux. Due to these special video signal processing modes, the sensitivity of «EVs» cameras far surpasses those of other manufacturers.

In most circumstances «EVs» night cameras are able to provide night time surveillance without any form of artificial lighting, either visible or invisible.

COMMON FEATURES

- Fine quality at day and unbeaten sensitivity at night and contrast of the image.
- Adaptive definition correction improves clarity of fine detail.
- Automatic activation of night mode in low light conditions.
- Two step AGC system raises contrast of images in low light.
- Electronic shutter allows use of less expensive small sized lenses with manual iris.
- Auto detecting of the lens type. It is necessary only to plug in the lens and the camera would detect its type (manual iris lens, direct drive or video drive).
- Special "focus setting" mode allows to set the focus at fully opened iris, which gives the maximum preciseness of the focusing process during any light condition.
- Wide voltage range from 9 to 14 Volts.
- A temperature range of cameras is from 0 up to +55°C («VNC» models) and from -55 up to +55°C («VNN» models).

SENSITIVITY RANGE



NEW ANTIFOG CAMERAS! UNIQUE FEATURE!

**VISIBLE IMPROVEMENT OF THE IMAGE DURING
THE SURVEILLANCE IN DIFFICULT WEATHER CONDITIONS:
RAIN, HAZE, SNOW, ETC.**

AUTOMATIC CONTRAST ADJUSTMENT UP TO 15 DB

The contrast adjustment is necessary not only in difficult weather conditions, but also for more effective detection of the low contrast objects, especially when using the long range lenses. The special scheme of the camera detect the decreasing of the contrast and if necessary increase it up to 5 times.

BETTER IMAGE QUALITY AT LONG DISTANCES (MORE THAN 10 KM)

While watching the image at long distances (more than 10 km) there are constant haze and light dispersion in long range lenses. Even during the clear day the contrast at distances more than 10 km decreases for 12 dB, as a minimum. That's why the Automatic contrast adjustment gives better image quality at long distances.



Illustration of the **SNOWSTORM** surveillance with the WAT-902H (left) and VSC-751 (right).

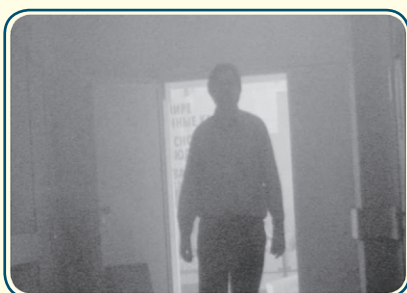
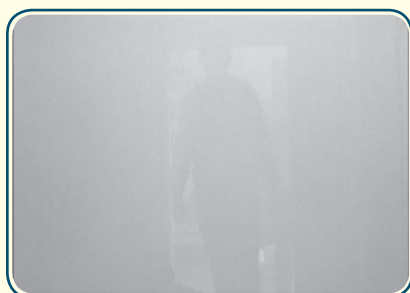


Illustration of the **INSIDE SMOKE** surveillance with the WAT-902H (left) and VSC-751 (right).

MAIN TECHNICAL PARAMETERS

Model	Image sensor	TV lines	Sensitivity, Lux	Current cons., mA	Case type
☑ VNS-552-A3 *	CCD 1/3"	380	0.003 (F2.0) *	100	
☑ VNS-752-A3 *	CCD 1/3"	570	0.003 (F2.0) *	100	
☑ VNS-752-H3 *	CCD 1/3"	570	0.0015 (F2.0) *	100	
☑ VNC-552-A3 *	CCD 1/3"	380	0.0008 (F0.8) *	130	
☑ VNC-752-A3 *	CCD 1/3"	570	0.0006 (F0.8) *	130	
☑ VNC-752-H3 *	CCD 1/3"	570	0.0004 (F0.8) *	130	
☑ VNC-553-A3 *	CCD 1/3"	380	0.00002 (F0.8) **	120	
☑ VNC-753-A3 *	CCD 1/3"	570	0.00006 (F0.8) **	120	
☑ VNC-753-H3 *	CCD 1/3"	570	0.00003 (F0.8) **	120	
☑ VNC-753-H2 *	CCD 1/2"	570	0.00002 (F0.8) **	120	
☑ VMC-750-HR *	CCD 1/3"	540	0.0002 (F1.2) **	100	
☑ VNP-552-A3 *	CCD 1/3"	380	0.003 (F2.0) *	100	
☑ VNP-752-A3 *	CCD 1/3"	570	0.003 (F2.0) *	100	
☑ VNP-752-H3 *	CCD 1/3"	570	0.0015 (F2.0) *	100	
☑ VNN-552-A3 *	CCD 1/3"	380	0.0008 (F0.8) *	220	
☑ VNN-752-A3 *	CCD 1/3"	570	0.0006 (F0.8) *	220	
☑ VNN-752-H3 *	CCD 1/3"	570	0.0004 (F0.8) *	220	
☑ VNN-553-A3 *	CCD 1/3"	380	0.00002 (F0.8) **	230	
☑ VNN-753-A3 *	CCD 1/3"	570	0.00006 (F0.8) **	230	
☑ VNN-753-H3 *	CCD 1/3"	570	0.00003 (F0.8) **	230	
☑ VNN-753-H2 *	CCD 1/2"	570	0.00002 (F0.8) **	250	
☑ VMN-750-HR *	CCD 1/3"	540	0.0002 (F1.2) **	250	
☑ VSC(N)-751 *	CCD 1/3"	570	0.012 (F1.2)	300	
☑ VSC(N)-756 *	CCD 1/2"	570	0.005 (F1.2)	300	

Antifog mode (*). Increase in sensitivity of up to 10 times (*) and up to 100 times (**).

SEVS
St. Petersburg
MADE IN RUSSIA!

EXAMPLES OF WORK



Illustration of the fog surveillance with the density of the fog 15db/km with the WAT-902H (top) and VSC-751 (bottom). The distance to the object in the central zone is about 1,5 km.



Illustration of the long distance surveillance with the WAT-902H (top) and VSC-751 (bottom) and 600 mm lens. The distance to the object on the pictures is about 7,7 km.





MADE IN RUSSIA!

DIFFERENT HOUSINGS



EVS cameras are available as either standard «VNC» units as in center or as custom built in waterproof housings with heated visors as above. Standard «VNC» cameras can of course be fitted into any external housing.



These «external» cameras are prefixed «VNN», all «VNC» models are available in this external configuration.



Also the «VNP» outdoor models with M12 lenses are available. The new housings for such models gives a possibility for easy installation, change and focusing of the lens, have a modern look, wall brackets are fixed by one screw and gives a possibility for vertical and horizontal camera position adjustment, and also allows to vary a colour of housings.

SAINT-PETERSBURG, RUSSIA
WWW.EVS.RU

SUPER DAY/NIGHT COLOUR CAMERAS VMC(N)-750-HR

FEATURES

- Sensitivity of super day/night cameras by EVS is 100 times better than any ordinary day/night camera.
- Cameras with the electromechanical switching of the “Day/night” mode.
- Sensitivity up to 0,0002 lux in “Super Day/night” VMC/VMN-750-HR camera.
- Automatic switching to the monochrome mode at 0,1 lux.
- VMC/VMN-750-HR works with any types of auto-iris lens.

COMMON FEATURES

- The adaptive definition corrector improves the clearness of fine details of the image.
- The two-step AGC system raises contrast of the images with low light exposure.
- Electronic shutter being arranged to varied illumination allows to use not only auto iris lenses but inexpensive small-sized lenses with manual iris, too.
- Automatic white balance.
- Digital processing of a signal and high accuracy in formation of the colour image.
- The camera automatically adjusts to changes in the white level of a scene, ensuring that colours of resulting picture are as much closer to the original as possible.
- «Day/night» mode automatic switching in condition of low light.
- A temperature range of cameras is from 0 up to +55°C («VMC» models) and from -55 up to +55°C («VMN» models).

MAIN TECHNICAL PARAMETERS

MODEL	VMC ¹ /VMN ² -750-HR
Image sensor	1/3", Super HAD CCD II
Effective pixels	582x752
Horizontal resolutions, TV lines	540
Sensitivity at the object in supersensitivity mode, Lux	0,0002 (F 1,2 s/n 20dB)
Power req., V	+9 ... +14
Current consumption, mA	90 ¹ /300 ²
S/N Ratio, dB	48
Dimensions, mm	50x57x63 ¹ / 140x185x325 ²
Features	Day/night and antifog mode

ALL THE CAMERAS BY EVS HAVE:

AUTOMATIC RECOGNITION OF THE LENS TYPE

- The camera would do automatic recognition of the lens type which is connected to the camera (Direct Drive, Video Drive or manual iris lens). There is no need to do any switching - just connect the lens connector and camera would switch the type of the lens automatically. In case of nothing connected to the iris connector camera would switch on the electronic shutter for manual iris lens.

PRECISE FOCUSING MODE IN DAYLIGHT CONDITION

- The camera would do automatic recognition of the lens type which is connected to the camera (Direct Drive, Video Drive or manual iris lens). There is no need to do any switching - just connect the lens connector and camera would switch the type of the lens automatically. In case of nothing connected to the iris connector camera would switch on the electronic shutter for manual iris lens.

Address: Saltykovskaya doroga, 18, St.Petersburg, Russia, 195253
E-mail: kutsenko@evs.ru, www.evs.ru